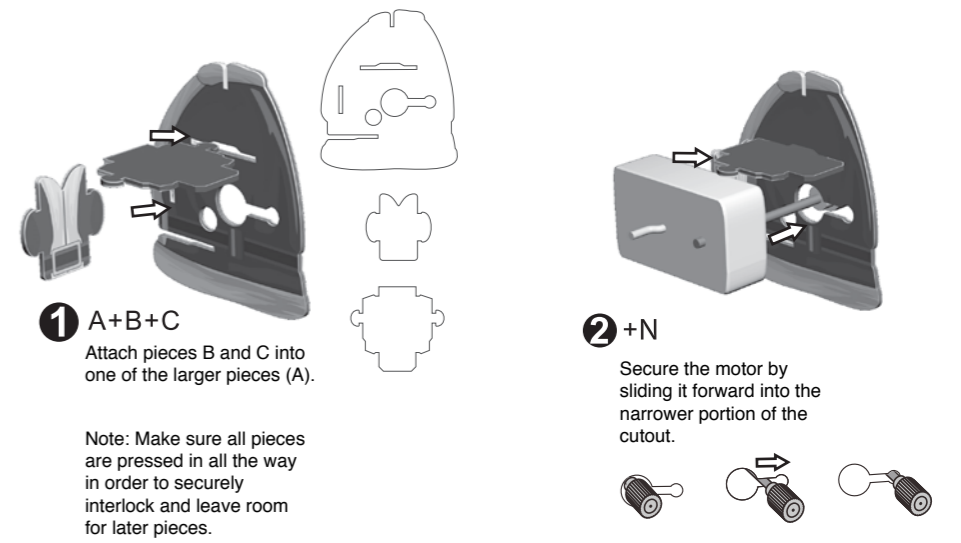
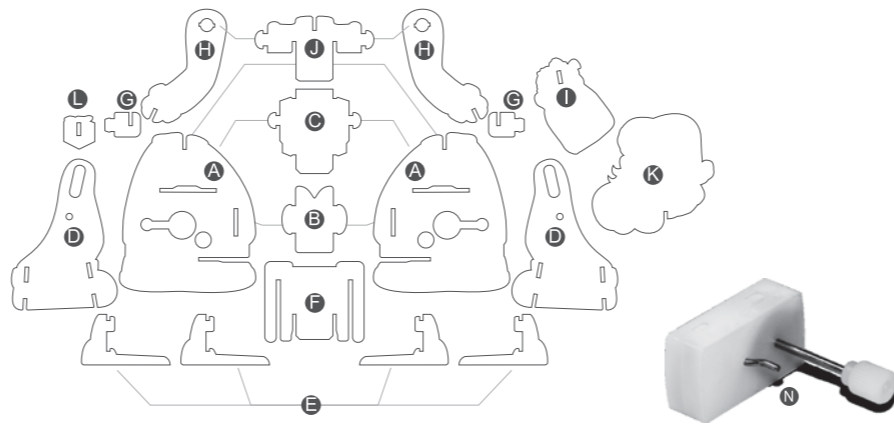




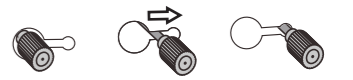
PARTS



1 A+B+C
Attach pieces B and C into one of the larger pieces (A).

Note: Make sure all pieces are pressed in all the way in order to securely interlock and leave room for later pieces.

2 +N
Secure the motor by sliding it forward into the narrower portion of the cutout.



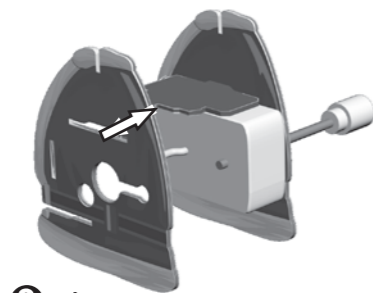
Read through this entire instruction manual BEFORE using Santa Strut 3D Wind Up Puzzles.

Images may vary from actual product

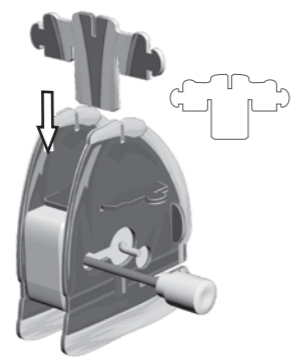
For additional questions and to check out other cool models, visit us at 3DWindUp.com!

PROTOCOL

ASSEMBLY



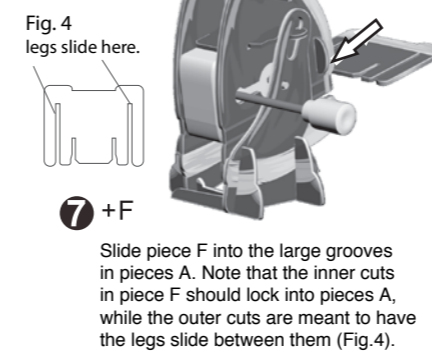
3 +A
Lock second piece A onto piece B to frame the motor.



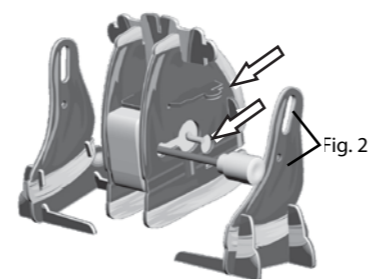
4 +J
Slide piece J down so it interlocks with pieces A. Be sure to push J all the way in.



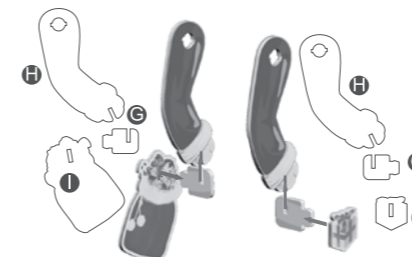
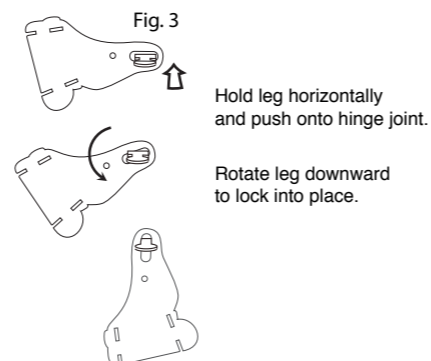
5 D+E
Lock foot pieces E onto piece D. Make sure pieces E are interlocked at both connection points (Fig.1) and that the narrow ends of pieces E face inward.



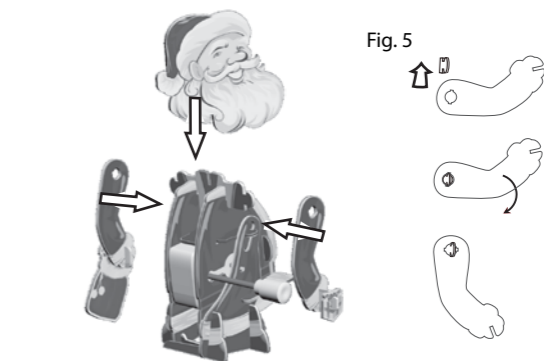
7 +F
Slide piece F into the large grooves in pieces A. Note that the inner cuts in piece F should lock into pieces A, while the outer cuts are meant to have the legs slide between them (Fig.4).



6 4+5
Attach assembled legs from step 5 onto assembled body from step 4. Note the spokes on the motor should fit into small holes cut into the leg pieces (Fig.2). Also note that the leg attaches to the torso in two places (Fig.3).



8 H+G+I
H+G+L
Attach piece I (Santa's bag) to arm piece H using connector piece G.
Attach piece L (gift) to arm piece H using connector piece G.



9 8+9+K
Pieces attach in the same way that legs do in step 6. Turn piece sideways, and rotate it downward to lock it into place (Fig.5). Attach head piece K.



10
Wind motor to race.